

Classroom
Edition

BRAIN TRAINING WITH ... THE NEW NUMBER CRUNCHERS

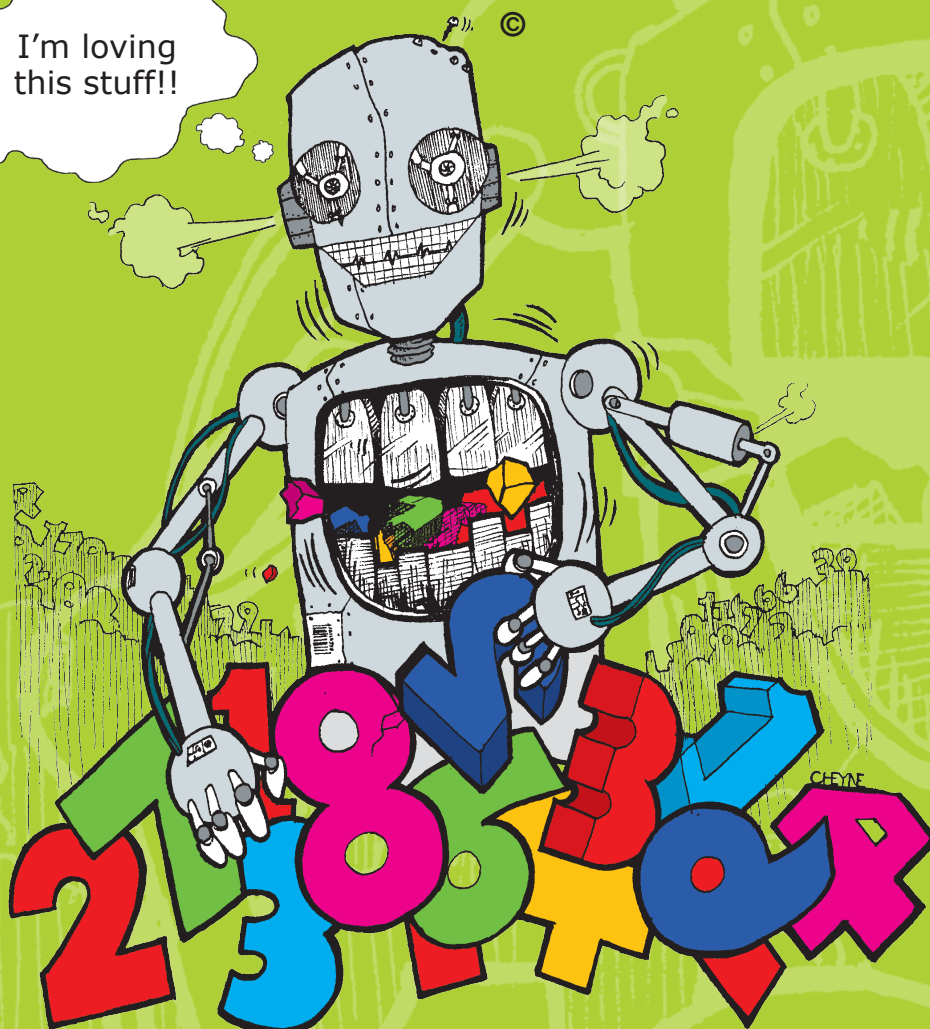
by Barry Clayton

LEVEL 5: FOUR OPERATIONS

One Calculation - End Answers Only

(BASIC NUMBER FACTS)

I'm loving
this stuff!!



Robit McCruncher®

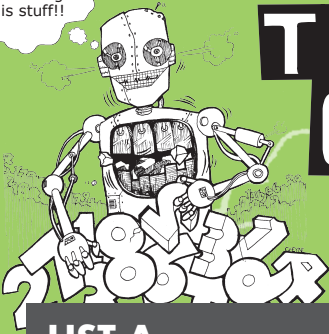
www.robitmccruncher.co.nz



**BRAINTOOLS FOR
BRAIN TRAINING**

**ALL AGES,
ALL STAGES**

I'm loving
this stuff!!



THE NEW NUMBER CRUNCHERS

BASIC NUMBER FACTS

LEVEL 5: FOUR OPERATIONS - End answers only

LEVEL 5
SET 1

LIST A

1. $8 \times 9 = \square$
2. $72 \div 9 = \square$
3. $3 + 7 = \square$
4. $9 + 7 = \square$
5. $21 \div 7 = \square$
6. $3 \times 7 = \square$
7. $6 + 6 = \square$
8. $9 \times 4 = \square$
9. $17 - 7 = \square$
10. $3 + 4 = \square$
11. $72 \div 8 = \square$
12. $16 - 8 = \square$
13. $11 - 5 = \square$
14. $10 - 3 = \square$
15. $5 \times 7 = \square$
16. $36 \div 4 = \square$
17. $9 + 8 = \square$
18. $35 \div 7 = \square$
19. $13 - 8 = \square$
20. $9 \times 10 = \square$

LIST B

1. $7 + 7 = \square$
2. $24 \div 6 = \square$
3. $54 \div 9 = \square$
4. $18 - 10 = \square$
5. $5 + 9 = \square$
6. $6 \times 4 = \square$
7. $56 \div 7 = \square$
8. $12 - 3 = \square$
9. $7 + 8 = \square$
10. $3 \times 4 = \square$
11. $56 \div 8 = \square$
12. $10 - 5 = \square$
13. $0 \times 8 = \square$
14. $10 + 6 = \square$
15. $9 + 2 = \square$
16. $90 \div 10 = \square$
17. $8 - 3 = \square$
18. $11 - 3 = \square$
19. $6 \times 9 = \square$
20. $8 \times 7 = \square$

LIST C

1. $21 \div 3 = \square$
2. $4 \times 7 = \square$
3. $28 \div 7 = \square$
4. $8 + 6 = \square$
5. $7 \times 5 = \square$
6. $18 - 9 = \square$
7. $63 \div 7 = \square$
8. $9 \times 6 = \square$
9. $4 + 3 = \square$
10. $7 + 10 = \square$
11. $35 \div 5 = \square$
12. $9 - 6 = \square$
13. $4 \times 3 = \square$
14. $7 + 3 = \square$
15. $13 - 6 = \square$
16. $54 \div 9 = \square$
17. $7 \times 3 = \square$
18. $7 - 5 = \square$
19. $6 + 9 = \square$
20. $13 - 8 = \square$

LIST D

1. $15 - 9 = \square$
2. $48 \div 6 = \square$
3. $8 + 7 = \square$
4. $8 + 2 = \square$
5. $56 \div 8 = \square$
6. $13 - 3 = \square$
7. $8 \times 8 = \square$
8. $9 + 4 = \square$
9. $9 + 5 = \square$
10. $19 - 9 = \square$
11. $7 + 5 = \square$
12. $4 \times 6 = \square$
13. $7 \times 8 = \square$
14. $11 - 8 = \square$
15. $24 \div 6 = \square$
16. $5 \times 2 = \square$
17. $27 \div 9 = \square$
18. $12 - 4 = \square$
19. $8 + 9 = \square$
20. $30 \div 5 = \square$

LIST E

1. $6 + 4 = \square$
2. $15 - 6 = \square$
3. $9 \times 2 = \square$
4. $6 \times 6 = \square$
5. $9 + 10 = \square$
6. $6 + 9 = \square$
7. $28 \div 4 = \square$
8. $11 - 4 = \square$
9. $10 \times 0 = \square$
10. $36 \div 6 = \square$
11. $18 \div 2 = \square$
12. $5 + 2 = \square$
13. $13 - 5 = \square$
14. $63 \div 9 = \square$
15. $12 - 8 = \square$
16. $7 \times 9 = \square$
17. $2 + 6 = \square$
18. $11 - 6 = \square$
19. $72 \div 8 = \square$
20. $9 \times 8 = \square$

LIST F

1. $6 + 3 = \square$
2. $8 \times 6 = \square$
3. $11 - 7 = \square$
4. $9 \div 3 = \square$
5. $10 + 4 = \square$
6. $9 \times 3 = \square$
7. $4 + 9 = \square$
8. $18 \div 3 = \square$
9. $12 - 7 = \square$
10. $16 - 9 = \square$
11. $64 \div 8 = \square$
12. $6 \times 3 = \square$
13. $56 \div 7 = \square$
14. $6 + 8 = \square$
15. $4 + 5 = \square$
16. $6 \times 5 = \square$
17. $8 - 5 = \square$
18. $9 - 7 = \square$
19. $4 \times 9 = \square$
20. $24 \div 4 = \square$



PUBLISHED IN NEW ZEALAND BY
THE OUTER EDGE LTD

© Copyright 2010 Barry Clayton

www.robitmccruncher.co.nz

I'm loving
this stuff!!



THE NEW NUMBER CRUNCHERS

BASIC NUMBER FACTS

LEVEL 5: FOUR OPERATIONS - End answers only

LEVEL 5
SET 2

LIST A

1. $9+8 = \square$
2. $35 \div 7 = \square$
3. $13-8 = \square$
4. $9 \times 10 = \square$
5. $11-5 = \square$
6. $10-3 = \square$
7. $5 \times 7 = \square$
8. $36 \div 4 = \square$
9. $17-7 = \square$
10. $3+4 = \square$
11. $72 \div 8 = \square$
12. $16-8 = \square$
13. $21 \div 7 = \square$
14. $3 \times 7 = \square$
15. $6+6 = \square$
16. $9 \times 4 = \square$
17. $8 \times 9 = \square$
18. $72 \div 9 = \square$
19. $3+7 = \square$
20. $9+7 = \square$

LIST B

1. $8-3 = \square$
2. $11-3 = \square$
3. $6 \times 9 = \square$
4. $8 \times 7 = \square$
5. $0 \times 8 = \square$
6. $10+6 = \square$
7. $9+2 = \square$
8. $90 \div 10 = \square$
9. $7+8 = \square$
10. $3 \times 4 = \square$
11. $56 \div 8 = \square$
12. $10-5 = \square$
13. $5+9 = \square$
14. $6 \times 4 = \square$
15. $56 \div 7 = \square$
16. $12-3 = \square$
17. $7+7 = \square$
18. $24 \div 6 = \square$
19. $54 \div 9 = \square$
20. $18-10 = \square$

LIST C

1. $7 \times 3 = \square$
2. $7-5 = \square$
3. $6+9 = \square$
4. $13-8 = \square$
5. $4 \times 3 = \square$
6. $7+3 = \square$
7. $13-6 = \square$
8. $54 \div 9 = \square$
9. $4+3 = \square$
10. $7+10 = \square$
11. $35 \div 5 = \square$
12. $9-6 = \square$
13. $7 \times 5 = \square$
14. $18-9 = \square$
15. $63 \div 7 = \square$
16. $9 \times 6 = \square$
17. $21 \div 3 = \square$
18. $4 \times 7 = \square$
19. $28 \div 7 = \square$
20. $8+6 = \square$

LIST D

1. $27 \div 9 = \square$
2. $12-4 = \square$
3. $8+9 = \square$
4. $30 \div 5 = \square$
5. $7 \times 8 = \square$
6. $11-8 = \square$
7. $24 \div 6 = \square$
8. $5 \times 2 = \square$
9. $9+5 = \square$
10. $19-9 = \square$
11. $7+5 = \square$
12. $4 \times 6 = \square$
13. $56 \div 8 = \square$
14. $13-3 = \square$
15. $8 \times 8 = \square$
16. $9+4 = \square$
17. $15-9 = \square$
18. $48 \div 6 = \square$
19. $8+7 = \square$
20. $8+2 = \square$

LIST E

1. $2+6 = \square$
2. $11-6 = \square$
3. $72 \div 8 = \square$
4. $9 \times 8 = \square$
5. $13-5 = \square$
6. $63 \div 9 = \square$
7. $12-8 = \square$
8. $7 \times 9 = \square$
9. $10 \times 0 = \square$
10. $36 \div 6 = \square$
11. $18 \div 2 = \square$
12. $5+2 = \square$
13. $9+10 = \square$
14. $6+9 = \square$
15. $24 \div 4 = \square$
16. $11-4 = \square$
17. $6+4 = \square$
18. $15-6 = \square$
19. $9 \times 2 = \square$
20. $6 \times 6 = \square$

LIST F

1. $8-5 = \square$
2. $9-7 = \square$
3. $4 \times 9 = \square$
4. $24 \div 4 = \square$
5. $56 \div 7 = \square$
6. $6+8 = \square$
7. $4+5 = \square$
8. $6 \times 5 = \square$
9. $12-7 = \square$
10. $16-9 = \square$
11. $64 \div 8 = \square$
12. $6 \times 3 = \square$
13. $10+4 = \square$
14. $9 \times 3 = \square$
15. $4+9 = \square$
16. $18 \div 3 = \square$
17. $6+3 = \square$
18. $8 \times 6 = \square$
19. $11-7 = \square$
20. $9 \div 3 = \square$



PUBLISHED IN NEW ZEALAND BY
THE OUTER EDGE LTD

© Copyright 2010 Barry Clayton

www.robitmccruncher.co.nz

I'm loving
this stuff!!



THE NEW NUMBER CRUNCHERS

BASIC NUMBER FACTS

LEVEL 5: FOUR OPERATIONS - End answers only

LEVEL 5
SET 3

LIST A

1. $17-7 = \square$
2. $3+4 = \square$
3. $72\div 8 = \square$
4. $16-8 = \square$
5. $9+8 = \square$
6. $35\div 7 = \square$
7. $13-8 = \square$
8. $9\times 10 = \square$
9. $21\div 7 = \square$
10. $3\times 7 = \square$
11. $6+6 = \square$
12. $9\times 4 = \square$
13. $8\times 9 = \square$
14. $72\div 9 = \square$
15. $3+7 = \square$
16. $9+7 = \square$
17. $11-5 = \square$
18. $10-3 = \square$
19. $5\times 7 = \square$
20. $36\div 4 = \square$

LIST B

1. $7+8 = \square$
2. $3\times 4 = \square$
3. $56\div 8 = \square$
4. $10-5 = \square$
5. $8-3 = \square$
6. $11-3 = \square$
7. $6\times 9 = \square$
8. $8\times 7 = \square$
9. $5+9 = \square$
10. $6\times 4 = \square$
11. $56\div 7 = \square$
12. $12-3 = \square$
13. $7+7 = \square$
14. $24\div 6 = \square$
15. $54\div 9 = \square$
16. $18-10 = \square$
17. $0\times 8 = \square$
18. $10+6 = \square$
19. $9+2 = \square$
20. $90\div 10 = \square$

LIST C

1. $4+3 = \square$
2. $7+10 = \square$
3. $35\div 5 = \square$
4. $9-6 = \square$
5. $7\times 3 = \square$
6. $7-5 = \square$
7. $6+9 = \square$
8. $13-8 = \square$
9. $7\times 5 = \square$
10. $18-9 = \square$
11. $63\div 7 = \square$
12. $9\times 6 = \square$
13. $21\div 3 = \square$
14. $4\times 7 = \square$
15. $28\div 7 = \square$
16. $8+6 = \square$
17. $4\times 3 = \square$
18. $7+3 = \square$
19. $13-6 = \square$
20. $54\div 9 = \square$

LIST D

1. $9+5 = \square$
2. $19-9 = \square$
3. $7+5 = \square$
4. $4\times 6 = \square$
5. $27\div 9 = \square$
6. $12-4 = \square$
7. $8+9 = \square$
8. $30\div 5 = \square$
9. $56\div 8 = \square$
10. $13-3 = \square$
11. $8\times 8 = \square$
12. $9+4 = \square$
13. $15-9 = \square$
14. $48\div 6 = \square$
15. $8+7 = \square$
16. $8+2 = \square$
17. $7\times 8 = \square$
18. $11-8 = \square$
19. $24\div 6 = \square$
20. $5\times 2 = \square$

LIST E

1. $10\times 0 = \square$
2. $36\div 6 = \square$
3. $18\div 2 = \square$
4. $5+2 = \square$
5. $2+6 = \square$
6. $11-6 = \square$
7. $72\div 8 = \square$
8. $9\times 8 = \square$
9. $9+10 = \square$
10. $6+9 = \square$
11. $24\div 8 = \square$
12. $11-4 = \square$
13. $6+4 = \square$
14. $15-6 = \square$
15. $9\times 2 = \square$
16. $6\times 6 = \square$
17. $13-5 = \square$
18. $63\div 9 = \square$
19. $12-8 = \square$
20. $7\times 9 = \square$

LIST F

1. $12-7 = \square$
2. $16-9 = \square$
3. $64\div 8 = \square$
4. $6\times 3 = \square$
5. $8-5 = \square$
6. $9-7 = \square$
7. $4\times 9 = \square$
8. $24\div 4 = \square$
9. $10+4 = \square$
10. $9\times 3 = \square$
11. $4+9 = \square$
12. $18\div 3 = \square$
13. $6+3 = \square$
14. $8\times 6 = \square$
15. $11-7 = \square$
16. $9\div 3 = \square$
17. $56\div 7 = \square$
18. $6+8 = \square$
19. $4+5 = \square$
20. $6\times 5 = \square$

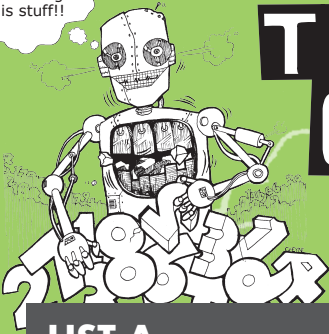


PUBLISHED IN NEW ZEALAND BY
THE OUTER EDGE LTD

© Copyright 2010 Barry Clayton

www.robitmccruncher.co.nz

I'm loving
this stuff!!



THE NEW NUMBER CRUNCHERS

BASIC NUMBER FACTS

LEVEL 5: FOUR OPERATIONS - End answers only

LEVEL 5
SET 4

LIST A

1. $11-5 = \square$
2. $10-3 = \square$
3. $5 \times 7 = \square$
4. $36 \div 4 = \square$
5. $8 \times 9 = \square$
6. $72 \div 9 = \square$
7. $3+7 = \square$
8. $9+7 = \square$
9. $9+8 = \square$
10. $35 \div 7 = \square$
11. $13-8 = \square$
12. $9 \times 10 = \square$
13. $17-7 = \square$
14. $3+4 = \square$
15. $72 \div 8 = \square$
16. $16-8 = \square$
17. $21 \div 7 = \square$
18. $3 \times 7 = \square$
19. $6+6 = \square$
20. $9 \times 4 = \square$

LIST B

1. $0 \times 8 = \square$
2. $10+6 = \square$
3. $9+2 = \square$
4. $90 \div 10 = \square$
5. $7+7 = \square$
6. $24 \div 6 = \square$
7. $54 \div 9 = \square$
8. $18-10 = \square$
9. $8-3 = \square$
10. $11-3 = \square$
11. $6 \times 9 = \square$
12. $8 \times 7 = \square$
13. $7+8 = \square$
14. $3 \times 4 = \square$
15. $56 \div 8 = \square$
16. $10-5 = \square$
17. $5+9 = \square$
18. $6 \times 4 = \square$
19. $56 \div 7 = \square$
20. $12-3 = \square$

LIST C

1. $4 \times 3 = \square$
2. $7+3 = \square$
3. $13-6 = \square$
4. $54 \div 9 = \square$
5. $21 \div 3 = \square$
6. $4 \times 7 = \square$
7. $28 \div 7 = \square$
8. $8+6 = \square$
9. $7 \times 3 = \square$
10. $7-5 = \square$
11. $6+9 = \square$
12. $13-8 = \square$
13. $4+3 = \square$
14. $7+10 = \square$
15. $35 \div 5 = \square$
16. $9-6 = \square$
17. $7 \times 5 = \square$
18. $18-9 = \square$
19. $63 \div 7 = \square$
20. $9 \times 6 = \square$

LIST D

1. $7 \times 8 = \square$
2. $11-8 = \square$
3. $24 \div 6 = \square$
4. $5 \times 2 = \square$
5. $15-9 = \square$
6. $48 \div 6 = \square$
7. $8+7 = \square$
8. $8+2 = \square$
9. $27 \div 9 = \square$
10. $12-4 = \square$
11. $8+9 = \square$
12. $30 \div 5 = \square$
13. $9+5 = \square$
14. $19-9 = \square$
15. $7+5 = \square$
16. $4 \times 6 = \square$
17. $56 \div 8 = \square$
18. $13-3 = \square$
19. $8 \times 8 = \square$
20. $9+4 = \square$

LIST E

1. $13-5 = \square$
2. $63 \div 9 = \square$
3. $12-8 = \square$
4. $7 \times 9 = \square$
5. $6+4 = \square$
6. $15-6 = \square$
7. $9 \times 2 = \square$
8. $6 \times 6 = \square$
9. $2+6 = \square$
10. $11-6 = \square$
11. $72 \div 8 = \square$
12. $9 \times 8 = \square$
13. $10 \times 0 = \square$
14. $36 \div 6 = \square$
15. $18 \div 2 = \square$
16. $5+2 = \square$
17. $9+10 = \square$
18. $6+9 = \square$
19. $28 \div 4 = \square$
20. $11-4 = \square$

LIST F

1. $56 \div 7 = \square$
2. $6+8 = \square$
3. $4+5 = \square$
4. $6 \times 5 = \square$
5. $6+3 = \square$
6. $8 \times 6 = \square$
7. $11-7 = \square$
8. $9 \div 3 = \square$
9. $8-5 = \square$
10. $9-7 = \square$
11. $4 \times 9 = \square$
12. $24 \div 4 = \square$
13. $12-7 = \square$
14. $16-9 = \square$
15. $64 \div 8 = \square$
16. $6 \times 3 = \square$
17. $10+4 = \square$
18. $9 \times 3 = \square$
19. $4+9 = \square$
20. $18 \div 3 = \square$



PUBLISHED IN NEW ZEALAND BY
THE OUTER EDGE LTD

© Copyright 2010 Barry Clayton

www.robitmccruncher.co.nz

I'm loving
this stuff!!



THE NEW NUMBER CRUNCHERS

BASIC NUMBER FACTS

LEVEL 5: FOUR OPERATIONS - End answers only

LEVEL 5
SETS

LIST A

1. $21 \div 7 = \square$
2. $3 \times 7 = \square$
3. $6 + 6 = \square$
4. $9 \times 4 = \square$
5. $17 - 7 = \square$
6. $3 + 4 = \square$
7. $72 \div 8 = \square$
8. $16 - 8 = \square$
9. $8 \times 9 = \square$
10. $72 \div 9 = \square$
11. $3 + 7 = \square$
12. $9 + 7 = \square$
13. $9 + 8 = \square$
14. $35 \div 7 = \square$
15. $13 - 8 = \square$
16. $9 \times 10 = \square$
17. $11 - 5 = \square$
18. $10 - 3 = \square$
19. $5 \times 7 = \square$
20. $36 \div 4 = \square$

LIST B

1. $5 + 9 = \square$
2. $6 \times 4 = \square$
3. $56 \div 7 = \square$
4. $12 - 3 = \square$
5. $7 + 8 = \square$
6. $3 \times 4 = \square$
7. $56 \div 8 = \square$
8. $10 - 5 = \square$
9. $7 + 7 = \square$
10. $24 \div 6 = \square$
11. $54 \div 9 = \square$
12. $18 - 10 = \square$
13. $8 - 3 = \square$
14. $11 - 3 = \square$
15. $6 \times 9 = \square$
16. $8 \times 7 = \square$
17. $0 \times 8 = \square$
18. $10 + 6 = \square$
19. $9 + 2 = \square$
20. $90 \div 10 = \square$

LIST C

1. $7 \times 5 = \square$
2. $18 - 9 = \square$
3. $63 \div 7 = \square$
4. $9 \times 6 = \square$
5. $4 + 3 = \square$
6. $7 + 10 = \square$
7. $35 \div 5 = \square$
8. $9 - 6 = \square$
9. $21 \div 3 = \square$
10. $4 \times 7 = \square$
11. $28 \div 7 = \square$
12. $8 + 6 = \square$
13. $7 \times 3 = \square$
14. $7 - 5 = \square$
15. $6 + 9 = \square$
16. $13 - 8 = \square$
17. $4 \times 3 = \square$
18. $7 + 3 = \square$
19. $13 - 6 = \square$
20. $54 \div 9 = \square$

LIST D

1. $56 \div 8 = \square$
2. $13 - 3 = \square$
3. $8 \times 8 = \square$
4. $9 + 4 = \square$
5. $9 + 5 = \square$
6. $19 - 9 = \square$
7. $7 + 5 = \square$
8. $4 \times 6 = \square$
9. $15 - 9 = \square$
10. $48 \div 6 = \square$
11. $8 + 7 = \square$
12. $8 + 2 = \square$
13. $27 \div 9 = \square$
14. $12 - 4 = \square$
15. $8 + 9 = \square$
16. $30 \div 5 = \square$
17. $7 \times 8 = \square$
18. $11 - 8 = \square$
19. $24 \div 6 = \square$
20. $5 \times 2 = \square$

LIST E

1. $9 + 10 = \square$
2. $6 + 9 = \square$
3. $28 \div 4 = \square$
4. $11 - 4 = \square$
5. $10 \times 0 = \square$
6. $36 \div 6 = \square$
7. $18 \div 2 = \square$
8. $5 + 2 = \square$
9. $6 + 4 = \square$
10. $15 - 6 = \square$
11. $9 \times 2 = \square$
12. $6 \times 6 = \square$
13. $2 + 6 = \square$
14. $11 - 6 = \square$
15. $72 \div 8 = \square$
16. $9 \times 8 = \square$
17. $13 - 5 = \square$
18. $63 \div 9 = \square$
19. $12 - 8 = \square$
20. $7 \times 9 = \square$

LIST F

1. $10 + 4 = \square$
2. $9 \times 3 = \square$
3. $4 + 9 = \square$
4. $18 \div 3 = \square$
5. $12 - 7 = \square$
6. $16 - 9 = \square$
7. $64 \div 8 = \square$
8. $6 \times 3 = \square$
9. $6 + 3 = \square$
10. $8 \times 6 = \square$
11. $11 - 7 = \square$
12. $9 \div 3 = \square$
13. $8 - 5 = \square$
14. $9 - 7 = \square$
15. $4 \times 9 = \square$
16. $24 \div 4 = \square$
17. $56 \div 7 = \square$
18. $6 + 8 = \square$
19. $4 + 5 = \square$
20. $6 \times 5 = \square$



PUBLISHED IN NEW ZEALAND BY
THE OUTER EDGE LTD

© Copyright 2010 Barry Clayton

www.robitmccruncher.co.nz

I'm loving
this stuff!!



THE NEW NUMBER CRUNCHERS

BASIC NUMBER FACTS

LEVEL 5: FOUR OPERATIONS - End answers only

LEVEL 5
SET 6

LIST A

1. $45 \div 9 = \square$
2. $19 - 10 = \square$
3. $8 \times 8 = \square$
4. $42 \div 7 = \square$
5. $8 + 3 = \square$
6. $7 - 4 = \square$
7. $15 \div 3 = \square$
8. $5 + 5 = \square$
9. $4 \times 8 = \square$
10. $12 - 6 = \square$
11. $4 \times 5 = \square$
12. $5 + 3 = \square$
13. $64 \div 8 = \square$
14. $17 - 8 = \square$
15. $8 \times 10 = \square$
16. $16 - 6 = \square$
17. $2 \times 6 = \square$
18. $14 \div 2 = \square$
19. $8 + 10 = \square$
20. $2 + 3 = \square$

LIST B

1. $14 - 9 = \square$
2. $63 \div 7 = \square$
3. $9 \times 5 = \square$
4. $9 + 3 = \square$
5. $28 \div 4 = \square$
6. $7 + 6 = \square$
7. $15 - 8 = \square$
8. $5 + 10 = \square$
9. $40 \div 4 = \square$
10. $11 - 2 = \square$
11. $3 \times 9 = \square$
12. $14 - 7 = \square$
13. $42 \div 6 = \square$
14. $5 + 8 = \square$
15. $15 - 5 = \square$
16. $7 \times 7 = \square$
17. $2 + 8 = \square$
18. $5 \times 3 = \square$
19. $16 - 4 = \square$
20. $5 \times 6 = \square$

LIST C

1. $8 + 4 = \square$
2. $9 \times 7 = \square$
3. $3 \times 8 = \square$
4. $10 + 3 = \square$
5. $45 \div 9 = \square$
6. $49 \div 7 = \square$
7. $12 - 5 = \square$
8. $7 \times 4 = \square$
9. $8 + 5 = \square$
10. $17 - 9 = \square$
11. $14 - 5 = \square$
12. $16 \div 8 = \square$
13. $9 - 3 = \square$
14. $10 + 9 = \square$
15. $10 \times 4 = \square$
16. $27 \div 9 = \square$
17. $3 + 8 = \square$
18. $48 \div 8 = \square$
19. $4 \times 4 = \square$
20. $9 - 5 = \square$

LIST D

1. $24 \div 3 = \square$
2. $18 - 8 = \square$
3. $5 \times 4 = \square$
4. $10 + 10 = \square$
5. $2 \times 7 = \square$
6. $12 \div 6 = \square$
7. $4 + 8 = \square$
8. $42 \div 7 = \square$
9. $15 - 9 = \square$
10. $8 \times 4 = \square$
11. $9 + 9 = \square$
12. $18 \div 9 = \square$
13. $14 - 6 = \square$
14. $7 - 3 = \square$
15. $3 + 6 = \square$
16. $3 \times 9 = \square$
17. $63 \div 9 = \square$
18. $8 - 2 = \square$
19. $9 \times 9 = \square$
20. $9 + 6 = \square$

LIST E

1. $6 \times 7 = \square$
2. $27 \div 3 = \square$
3. $15 - 7 = \square$
4. $0 \times 7 = \square$
5. $7 + 9 = \square$
6. $8 \times 5 = \square$
7. $7 - 2 = \square$
8. $5 + 7 = \square$
9. $8 + 2 = \square$
10. $81 \div 9 = \square$
11. $2 \times 9 = \square$
12. $18 \div 6 = \square$
13. $13 - 4 = \square$
14. $2 + 7 = \square$
15. $80 \div 10 = \square$
16. $16 - 10 = \square$
17. $3 \times 5 = \square$
18. $4 + 7 = \square$
19. $45 \div 9 = \square$
20. $11 - 9 = \square$

LIST F

1. $8 - 6 = \square$
2. $8 + 8 = \square$
3. $32 \div 8 = \square$
4. $13 - 9 = \square$
5. $6 + 5 = \square$
6. $8 \times 3 = \square$
7. $42 \div 6 = \square$
8. $16 - 7 = \square$
9. $7 \times 6 = \square$
10. $7 + 3 = \square$
11. $5 \times 8 = \square$
12. $32 \div 4 = \square$
13. $3 + 9 = \square$
14. $5 + 8 = \square$
15. $32 \div 4 = \square$
16. $10 + 7 = \square$
17. $9 - 4 = \square$
18. $14 - 8 = \square$
19. $5 \times 9 = \square$
20. $45 \div 5 = \square$



PUBLISHED IN NEW ZEALAND BY
THE OUTER EDGE LTD

© Copyright 2010 Barry Clayton

www.robitmccruncher.co.nz

I'm loving
this stuff!!



THE NEW NUMBER CRUNCHERS

BASIC NUMBER FACTS

LEVEL 5: FOUR OPERATIONS - End answers only

LEVEL 5
SET 7

LIST A

1. $2 \times 6 = \square$
2. $14 \div 2 = \square$
3. $8 + 10 = \square$
4. $2 + 3 = \square$
5. $64 \div 8 = \square$
6. $17 - 8 = \square$
7. $8 \times 10 = \square$
8. $16 - 6 = \square$
9. $4 \times 8 = \square$
10. $12 - 6 = \square$
11. $4 \times 5 = \square$
12. $5 + 3 = \square$
13. $8 + 3 = \square$
14. $7 - 4 = \square$
15. $15 \div 3 = \square$
16. $5 + 5 = \square$
17. $45 \div 9 = \square$
18. $19 - 10 = \square$
19. $8 \times 8 = \square$
20. $42 \div 7 = \square$

LIST B

1. $2 + 8 = \square$
2. $5 \times 3 = \square$
3. $16 \div 4 = \square$
4. $5 \times 6 = \square$
5. $42 \div 6 = \square$
6. $5 + 8 = \square$
7. $15 - 5 = \square$
8. $7 \times 7 = \square$
9. $40 \div 4 = \square$
10. $11 - 2 = \square$
11. $3 \times 9 = \square$
12. $14 - 7 = \square$
13. $28 \div 4 = \square$
14. $7 + 6 = \square$
15. $15 - 8 = \square$
16. $5 + 10 = \square$
17. $14 - 9 = \square$
18. $63 \div 7 = \square$
19. $9 \times 5 = \square$
20. $9 + 3 = \square$

LIST C

1. $3 + 8 = \square$
2. $48 \div 8 = \square$
3. $4 \times 4 = \square$
4. $9 - 5 = \square$
5. $9 - 3 = \square$
6. $10 + 9 = \square$
7. $10 \times 4 = \square$
8. $27 \div 9 = \square$
9. $8 + 5 = \square$
10. $17 - 9 = \square$
11. $14 - 5 = \square$
12. $16 \div 8 = \square$
13. $45 \div 9 = \square$
14. $49 \div 7 = \square$
15. $12 - 5 = \square$
16. $7 \times 4 = \square$
17. $8 + 4 = \square$
18. $9 \times 7 = \square$
19. $3 \times 8 = \square$
20. $10 + 3 = \square$

LIST D

1. $63 \div 9 = \square$
2. $8 - 2 = \square$
3. $9 \times 9 = \square$
4. $9 + 6 = \square$
5. $14 - 6 = \square$
6. $7 - 3 = \square$
7. $3 + 6 = \square$
8. $3 \times 9 = \square$
9. $15 - 9 = \square$
10. $8 \times 4 = \square$
11. $9 + 9 = \square$
12. $18 \div 9 = \square$
13. $2 \times 7 = \square$
14. $12 \div 6 = \square$
15. $4 + 8 = \square$
16. $42 \div 7 = \square$
17. $24 \div 3 = \square$
18. $18 - 8 = \square$
19. $5 \times 4 = \square$
20. $10 + 10 = \square$

LIST E

1. $3 \times 5 = \square$
2. $4 + 7 = \square$
3. $45 \div 9 = \square$
4. $11 - 9 = \square$
5. $13 - 4 = \square$
6. $2 + 7 = \square$
7. $80 \div 10 = \square$
8. $16 - 10 = \square$
9. $8 + 2 = \square$
10. $81 \div 9 = \square$
11. $2 \times 9 = \square$
12. $18 \div 6 = \square$
13. $7 + 9 = \square$
14. $8 \times 5 = \square$
15. $7 - 2 = \square$
16. $5 + 7 = \square$
17. $6 \times 7 = \square$
18. $27 \div 3 = \square$
19. $15 - 7 = \square$
20. $0 \times 7 = \square$

LIST F

1. $9 - 4 = \square$
2. $14 - 8 = \square$
3. $5 \times 9 = \square$
4. $45 \div 5 = \square$
5. $3 + 9 = \square$
6. $5 + 8 = \square$
7. $32 \div 4 = \square$
8. $10 + 7 = \square$
9. $7 \times 6 = \square$
10. $7 + 3 = \square$
11. $5 \times 8 = \square$
12. $32 \div 4 = \square$
13. $6 + 5 = \square$
14. $8 \times 3 = \square$
15. $42 \div 6 = \square$
16. $16 - 7 = \square$
17. $8 - 6 = \square$
18. $8 + 8 = \square$
19. $32 \div 8 = \square$
20. $13 - 9 = \square$

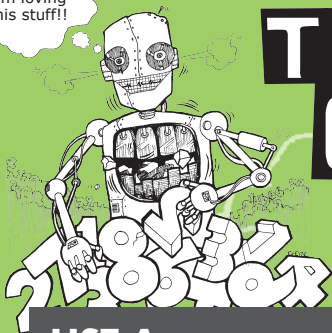


PUBLISHED IN NEW ZEALAND BY
THE OUTER EDGE LTD

© Copyright 2010 Barry Clayton

www.robitmccruncher.co.nz

I'm loving
this stuff!!



THE NEW NUMBER CRUNCHERS

BASIC NUMBER FACTS

LEVEL 5: FOUR OPERATIONS - End answers only

LEVEL 5
SET 10

LIST A

1. $4 \times 8 = \square$
2. $12 - 6 = \square$
3. $4 \times 5 = \square$
4. $5 + 3 = \square$
5. $2 \times 6 = \square$
6. $14 \div 2 = \square$
7. $8 + 10 = \square$
8. $2 + 3 = \square$
9. $8 + 3 = \square$
10. $7 - 4 = \square$
11. $15 \div 3 = \square$
12. $5 + 5 = \square$
13. $45 \div 9 = \square$
14. $19 - 10 = \square$
15. $8 \times 8 = \square$
16. $42 \div 7 = \square$
17. $64 \div 8 = \square$
18. $17 - 8 = \square$
19. $8 \times 10 = \square$
20. $16 - 6 = \square$

LIST B

1. $40 \div 4 = \square$
2. $11 - 2 = \square$
3. $3 \times 9 = \square$
4. $14 - 7 = \square$
5. $2 + 8 = \square$
6. $5 \times 3 = \square$
7. $16 \div 4 = \square$
8. $5 \times 6 = \square$
9. $28 \div 4 = \square$
10. $7 + 6 = \square$
11. $15 - 8 = \square$
12. $5 + 10 = \square$
13. $14 - 9 = \square$
14. $63 \div 7 = \square$
15. $9 \times 5 = \square$
16. $9 + 3 = \square$
17. $42 \div 6 = \square$
18. $5 + 8 = \square$
19. $15 - 5 = \square$
20. $7 \times 7 = \square$

LIST C

1. $8 + 5 = \square$
2. $17 - 9 = \square$
3. $14 - 5 = \square$
4. $16 \div 8 = \square$
5. $3 + 8 = \square$
6. $48 \div 8 = \square$
7. $4 \times 4 = \square$
8. $9 - 5 = \square$
9. $45 \div 9 = \square$
10. $49 \div 7 = \square$
11. $12 - 5 = \square$
12. $7 \times 4 = \square$
13. $8 + 4 = \square$
14. $9 \times 7 = \square$
15. $3 \times 8 = \square$
16. $10 + 3 = \square$
17. $9 - 3 = \square$
18. $10 + 9 = \square$
19. $10 \times 4 = \square$
20. $27 \div 9 = \square$

LIST D

1. $15 - 9 = \square$
2. $8 \times 4 = \square$
3. $9 + 9 = \square$
4. $18 \div 9 = \square$
5. $63 \div 9 = \square$
6. $8 - 2 = \square$
7. $9 \times 9 = \square$
8. $9 + 6 = \square$
9. $2 \times 7 = \square$
10. $12 \div 6 = \square$
11. $4 + 8 = \square$
12. $42 \div 7 = \square$
13. $24 \div 3 = \square$
14. $18 - 8 = \square$
15. $5 \times 4 = \square$
16. $10 + 10 = \square$
17. $14 - 6 = \square$
18. $7 - 3 = \square$
19. $3 + 6 = \square$
20. $3 \times 9 = \square$

LIST E

1. $8 + 2 = \square$
2. $81 \div 9 = \square$
3. $2 \times 9 = \square$
4. $18 \div 6 = \square$
5. $3 \times 5 = \square$
6. $4 + 7 = \square$
7. $45 \div 9 = \square$
8. $11 - 9 = \square$
9. $7 + 9 = \square$
10. $8 \times 5 = \square$
11. $7 - 2 = \square$
12. $5 + 7 = \square$
13. $6 \times 7 = \square$
14. $27 \div 3 = \square$
15. $15 - 7 = \square$
16. $0 \times 7 = \square$
17. $13 - 4 = \square$
18. $2 + 7 = \square$
19. $80 \div 10 = \square$
20. $16 - 10 = \square$

LIST F

1. $7 \times 6 = \square$
2. $7 + 3 = \square$
3. $5 \times 8 = \square$
4. $32 \div 4 = \square$
5. $9 - 4 = \square$
6. $14 - 8 = \square$
7. $5 \times 9 = \square$
8. $45 \div 5 = \square$
9. $6 + 5 = \square$
10. $8 \times 3 = \square$
11. $42 \div 6 = \square$
12. $16 - 7 = \square$
13. $8 - 6 = \square$
14. $8 + 8 = \square$
15. $32 \div 8 = \square$
16. $13 - 9 = \square$
17. $3 + 9 = \square$
18. $5 + 8 = \square$
19. $32 \div 4 = \square$
20. $10 + 7 = \square$



PUBLISHED IN NEW ZEALAND BY
THE OUTER EDGE LTD

© Copyright 2010 Barry Clayton

www.robitmccruncher.co.nz

I'm loving
this stuff!!



THE NEW NUMBER CRUNCHERS

BASIC NUMBER FACTS

LEVEL 5: FOUR OPERATIONS - End answers only

LEVEL 5
SET 9

LIST A

1. $64 \div 8 = \square$
2. $17 - 8 = \square$
3. $8 \times 10 = \square$
4. $16 - 6 = \square$
5. $45 \div 9 = \square$
6. $19 - 10 = \square$
7. $8 \times 8 = \square$
8. $42 \div 7 = \square$
9. $2 \times 6 = \square$
10. $14 \div 2 = \square$
11. $8 + 10 = \square$
12. $2 + 3 = \square$
13. $4 \times 8 = \square$
14. $12 - 6 = \square$
15. $4 \times 5 = \square$
16. $5 + 3 = \square$
17. $8 + 3 = \square$
18. $7 - 4 = \square$
19. $15 \div 3 = \square$
20. $5 + 5 = \square$

LIST B

1. $42 \div 6 = \square$
2. $5 + 8 = \square$
3. $15 - 5 = \square$
4. $7 \times 7 = \square$
5. $14 - 9 = \square$
6. $63 \div 7 = \square$
7. $9 \times 5 = \square$
8. $9 + 3 = \square$
9. $2 + 8 = \square$
10. $5 \times 3 = \square$
11. $16 \div 4 = \square$
12. $5 \times 6 = \square$
13. $40 \div 4 = \square$
14. $11 - 2 = \square$
15. $3 \times 9 = \square$
16. $14 - 7 = \square$
17. $28 \div 4 = \square$
18. $7 + 6 = \square$
19. $15 - 8 = \square$
20. $5 + 10 = \square$

LIST C

1. $9 - 3 = \square$
2. $10 + 9 = \square$
3. $10 \times 4 = \square$
4. $27 \div 9 = \square$
5. $8 + 4 = \square$
6. $9 \times 7 = \square$
7. $3 \times 8 = \square$
8. $10 + 3 = \square$
9. $3 + 8 = \square$
10. $48 \div 8 = \square$
11. $4 \times 4 = \square$
12. $9 - 5 = \square$
13. $8 + 5 = \square$
14. $17 - 9 = \square$
15. $14 - 5 = \square$
16. $16 \div 8 = \square$
17. $45 \div 9 = \square$
18. $49 \div 7 = \square$
19. $12 - 5 = \square$
20. $7 \times 4 = \square$

LIST D

1. $14 - 6 = \square$
2. $7 - 3 = \square$
3. $3 + 6 = \square$
4. $3 \times 9 = \square$
5. $24 \div 3 = \square$
6. $18 - 8 = \square$
7. $5 \times 4 = \square$
8. $10 + 10 = \square$
9. $63 \div 9 = \square$
10. $8 - 2 = \square$
11. $9 \times 9 = \square$
12. $9 + 6 = \square$
13. $15 - 9 = \square$
14. $8 \times 4 = \square$
15. $9 + 9 = \square$
16. $18 \div 9 = \square$
17. $2 \times 7 = \square$
18. $12 \div 6 = \square$
19. $4 + 8 = \square$
20. $42 \div 7 = \square$

LIST E

1. $13 - 4 = \square$
2. $2 + 7 = \square$
3. $80 \div 10 = \square$
4. $16 - 10 = \square$
5. $6 \times 7 = \square$
6. $27 \div 3 = \square$
7. $15 - 7 = \square$
8. $0 \times 7 = \square$
9. $3 \times 5 = \square$
10. $4 + 7 = \square$
11. $45 \div 9 = \square$
12. $11 - 9 = \square$
13. $8 + 2 = \square$
14. $81 \div 9 = \square$
15. $2 \times 9 = \square$
16. $18 \div 6 = \square$
17. $7 + 9 = \square$
18. $8 \times 5 = \square$
19. $7 - 2 = \square$
20. $5 + 7 = \square$

LIST F

1. $3 + 9 = \square$
2. $5 + 8 = \square$
3. $32 \div 4 = \square$
4. $10 + 7 = \square$
5. $8 - 6 = \square$
6. $8 + 8 = \square$
7. $32 \div 8 = \square$
8. $13 - 9 = \square$
9. $9 - 4 = \square$
10. $14 - 8 = \square$
11. $5 \times 9 = \square$
12. $45 \div 5 = \square$
13. $7 \times 6 = \square$
14. $7 + 3 = \square$
15. $5 \times 8 = \square$
16. $32 \div 4 = \square$
17. $6 + 5 = \square$
18. $8 \times 3 = \square$
19. $42 \div 6 = \square$
20. $16 - 7 = \square$

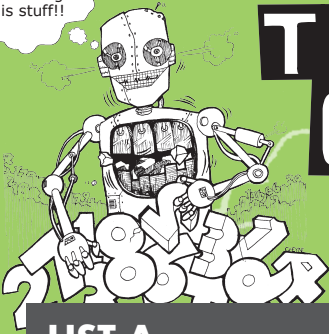


PUBLISHED IN NEW ZEALAND BY
THE OUTER EDGE LTD

© Copyright 2010 Barry Clayton

www.robitmccruncher.co.nz

I'm loving
this stuff!!



THE NEW NUMBER CRUNCHERS

BASIC NUMBER FACTS

LEVEL 5: FOUR OPERATIONS - End answers only



LIST A

1. $8+3 = \square$
2. $7-4 = \square$
3. $15\div 3 = \square$
4. $5+5 = \square$
5. $4\times 8 = \square$
6. $12-6 = \square$
7. $4\times 5 = \square$
8. $5+3 = \square$
9. $45\div 9 = \square$
10. $19-10 = \square$
11. $8\times 8 = \square$
12. $42\div 7 = \square$
13. $2\times 6 = \square$
14. $14\div 2 = \square$
15. $8+10 = \square$
16. $2+3 = \square$
17. $64\div 8 = \square$
18. $17-8 = \square$
19. $8\times 10 = \square$
20. $16-6 = \square$

LIST B

1. $28\div 4 = \square$
2. $7+6 = \square$
3. $15-8 = \square$
4. $5+10 = \square$
5. $40\div 4 = \square$
6. $11-2 = \square$
7. $3\times 9 = \square$
8. $14-7 = \square$
9. $14-9 = \square$
10. $63\div 7 = \square$
11. $9\times 5 = \square$
12. $9+3 = \square$
13. $2+8 = \square$
14. $5\times 3 = \square$
15. $16\div 4 = \square$
16. $5\times 6 = \square$
17. $42\div 6 = \square$
18. $5+8 = \square$
19. $15-5 = \square$
20. $7\times 7 = \square$

LIST C

1. $45\div 9 = \square$
2. $49\div 7 = \square$
3. $12-5 = \square$
4. $7\times 4 = \square$
5. $8+5 = \square$
6. $17-9 = \square$
7. $14-5 = \square$
8. $16\div 8 = \square$
9. $8+4 = \square$
10. $9\times 7 = \square$
11. $3\times 8 = \square$
12. $10+3 = \square$
13. $3+8 = \square$
14. $48\div 8 = \square$
15. $4\times 4 = \square$
16. $9-5 = \square$
17. $9-3 = \square$
18. $10+9 = \square$
19. $10\times 4 = \square$
20. $27\div 9 = \square$

LIST D

1. $2\times 7 = \square$
2. $12\div 6 = \square$
3. $4+8 = \square$
4. $42\div 7 = \square$
5. $15-9 = \square$
6. $8\times 4 = \square$
7. $9+9 = \square$
8. $18\div 9 = \square$
9. $24\div 3 = \square$
10. $18-8 = \square$
11. $5\times 4 = \square$
12. $10+10 = \square$
13. $63\div 9 = \square$
14. $8-2 = \square$
15. $9\times 9 = \square$
16. $9+6 = \square$
17. $14-6 = \square$
18. $7-3 = \square$
19. $3+6 = \square$
20. $3\times 9 = \square$

LIST E

1. $7+9 = \square$
2. $8\times 5 = \square$
3. $7-2 = \square$
4. $5+7 = \square$
5. $8+2 = \square$
6. $81\div 9 = \square$
7. $2\times 9 = \square$
8. $18\div 6 = \square$
9. $6\times 7 = \square$
10. $27\div 3 = \square$
11. $15-7 = \square$
12. $0\times 7 = \square$
13. $3\times 5 = \square$
14. $4+7 = \square$
15. $45\div 9 = \square$
16. $11-9 = \square$
17. $13-4 = \square$
18. $2+7 = \square$
19. $80\div 10 = \square$
20. $16-10 = \square$

LIST F

1. $6+5 = \square$
2. $8\times 3 = \square$
3. $42\div 6 = \square$
4. $16-7 = \square$
5. $7\times 6 = \square$
6. $7+3 = \square$
7. $5\times 8 = \square$
8. $32\div 4 = \square$
9. $8-6 = \square$
10. $8+8 = \square$
11. $32\div 8 = \square$
12. $13-9 = \square$
13. $9-4 = \square$
14. $14-8 = \square$
15. $5\times 9 = \square$
16. $45\div 5 = \square$
17. $3+9 = \square$
18. $5+8 = \square$
19. $32\div 4 = \square$
20. $10+7 = \square$

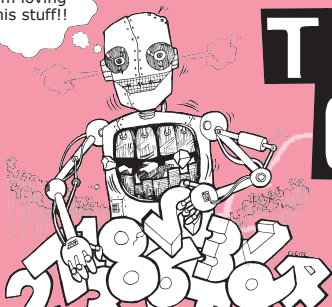


PUBLISHED IN NEW ZEALAND BY
THE OUTER EDGE LTD

© Copyright 2010 Barry Clayton

www.robitmccruncher.co.nz

I'm loving
this stuff!!



THE NEW NUMBER CRUNCHERS

BASIC NUMBER FACTS
ANSWERS FOR ALL SETS AT THIS LEVEL

LEVEL 5
ANSWERS

SET 1						
LIST						
	A	B	C	D	E	F
1	72	14	7	6	10	9
2	8	4	28	8	9	48
3	10	6	4	15	18	4
4	16	8	14	10	36	3
5	3	14	35	7	19	14
6	21	24	9	10	15	27
7	12	8	9	64	7	13
8	36	9	54	13	7	6
9	10	15	7	14	0	5
10	7	12	17	10	6	7
11	9	7	7	12	9	8
12	8	5	3	24	7	18
13	6	0	12	56	8	8
14	7	16	10	3	7	14
15	35	11	7	4	4	9
16	9	9	6	10	63	30
17	17	5	21	3	8	3
18	5	8	2	8	5	2
19	5	54	15	17	9	36
20	90	56	5	6	72	6

SET 2						
LIST						
	A	B	C	D	E	F
1	17	5	21	3	8	3
2	5	8	2	8	5	2
3	5	54	15	17	9	36
4	90	56	5	6	72	6
5	6	0	12	56	8	8
6	7	16	10	3	7	14
7	35	11	17	4	4	9
8	9	9	6	10	63	30
9	10	15	7	14	0	5
10	7	12	17	10	6	7
11	9	7	7	12	9	8
12	8	5	3	24	7	18
13	3	14	35	7	19	14
14	21	24	9	10	15	27
15	12	8	9	64	7	13
16	36	9	54	13	7	6
17	72	14	7	6	10	9
18	8	4	28	8	9	48
19	10	6	4	15	18	4
20	16	8	14	10	36	3

SET 3						
LIST						
	A	B	C	D	E	F
1	10	15	7	14	0	5
2	7	12	17	10	6	7
3	9	7	7	12	9	8
4	8	5	3	24	7	18
5	17	5	21	3	8	3
6	5	8	2	8	5	2
7	5	54	15	17	9	36
8	90	56	5	6	72	6
9	3	14	35	7	19	14
10	21	24	9	10	15	27
11	12	8	9	64	3	13
12	36	9	54	13	7	6
13	72	14	7	6	10	9
14	8	4	28	8	9	48
15	10	6	4	15	18	4
16	16	8	14	10	36	3
17	6	0	12	56	8	8
18	7	16	10	3	7	14
19	35	11	7	4	4	9
20	9	9	6	10	63	30

SET 4						
LIST						
	A	B	C	D	E	F
1	6	0	12	56	8	8
2	7	16	10	3	7	14
3	35	11	7	4	4	9
4	9	9	6	10	63	30
5	72	14	7	6	10	9
6	8	4	28	8	9	48
7	10	6	4	15	18	4
8	16	8	14	10	36	3
9	17	5	21	3	8	3
10	5	8	2	8	5	2
11	5	54	15	17	9	36
12	90	56	5	6	72	6
13	10	15	7	14	0	5
14	7	12	17	10	6	7
15	9	7	7	12	9	8
16	8	5	3	24	7	18
17	3	14	35	7	19	14
18	21	24	9	10	15	27
19	12	8	9	64	7	13
20	36	9	54	13	7	6

SET 5						
LIST						
	A	B	C	D	E	F
1	3	14	35	7	19	14
2	21	24	9	10	15	27
3	12	8	9	64	7	13
4	36	9	54	13	7	6
5	10	15	7	14	0	5
6	7	12	17	10	6	7
7	9	7	7	12	9	8
8	8	5	3	24	7	18
9	72	14	7	6	10	9
10	8	4	28	8	15	48
11	10	6	4	15	18	4
12	16	8	14	10	36	3
13	17	5	21	3	8	3
14	5	8	2	8	5	2
15	5	54	15	17	9	36
16	90	56	5	6	72	6
17	6	0	12	56	8	8
18	7	16	10	3	7	14
19	35	11	7	4	4	9
20	9	9	6	10	63	30

SET 6						
LIST						
	A	B	C	D	E	F
1	5	5	12	8	42	2
2	9	9	63	10	9	16
3	64	45	24	20	8	4
4	6	12	13	20	0	4
5	11	7	5	14	16	11
6	3	13	7	2	40	24
7	5	7	7	12	5	7
8	10	15	28	6	12	9
9	32	10	13	6	10	42
10	6	9	8	32	9	10
11	20	27	9	18	18	40
12	8	7	2	2	3	8
13	8	7	6	8	9	12
14	9	13	19	4	9	13
15	80	10	40	9	8	8
16	10	49	3	27	6	17
17	12	10	11	7	15	5
18	7	15	6	6	11	6
19	18	12	16	81	5	45
20	5	30	4	15	2	9

SET 7						
LIST						
	A	B	C	D	E	F
1	12	10	11	7	15	5
2	7	15	6	6	11	6
3	18	4	16	81	5	45
4	5	30	4	15	2	9
5	8	7	6	8	9	12
6	9	13	19	4	9	13
7	80	10	40	9	8	8
8	10	49	3	27	6	17
9	32	10	13	6	10	42
10	6	9	8	32	9	10
11	20	27	9	18	18	40
12	8	7	2	2	3	8
13	11	7	5	14	16	11
14	3	13	7	2	40	24
15	5	7	7	12	5	7
16	10	15	28	6	12	9
17	5	5	12	8	42	2
18	9	9	63	10	9	16
19	64	45	24	20	8	4
20	6	12	13	20	0	4

SET 8						
LIST						
	A	B	C	D	E	F
1	32	10	13	6	10	42
2	6	9	8	32	9	10
3	20	27	9	18	18	40
4	8	7	2	2	3	8
5	12	10	11	7	15	5
6	7	15	6	6	11	6
7	18	4	16	81	5	45
8	5	30	4	15	2	9
9	11	7	5	14	16	11
10	3	13	7	2	40	24
11	5	7	7	12	5	7
12	10	15	28	6	12	9
13	5	5	12	8	42	2
14	9	9	63	10	9	16
15	64	45	24	20	8	4
16	6	12	13	20	0	4
17	8	7	6	8	9	12
18	9	13	19	4	9	13
19	80	10	40	9	8	8
20	10	49	3	27	6	17

SET 9						
LIST						
	A	B	C	D	E	F
1	8	7	6	8	9	12
2	9	13	19	4	9	13
3	80	10	40	9	8	8
4	10	49	3	27	6	17
5	5	5	12	8	42	2
6	9	9	63	10	9	16
7	64	45	24	20	8	4
8	6	12	13	20	0	4
9	12	10	11	7	15	5
10	7	15	6	6	11	6
11	18	4	16	81	5	45
12	5	30	4	15	2	9
13	32	10	13	6	10	42
14	6	9	8	32	9	10
15	20	27	9	18	18	40
16	8	7	2	2	3	8
17	11	7	5	14	16	11
18	3	13	7	2	40	24
19	5	7	7	12	5	7
20	10	15	28	6	12	9

SET 10						
LIST						
	A	B	C	D	E	F
1	11	7	5	14	16	11
2	3	13	7	2	40	24
3	5	7	7	12	5	7
4	10	15	28	6	12	9
5	32	10	13	6	10	42
6	6	9	8	32	9	10
7	20	27	9	18	18	40
8	8	7	2	2	3	8
9	5	5	12	8	42	2
10	9	9	63	10	9	16
11	64	45	24	20	8	4
12	6	12	13	20	0	4
13	12	10	11	7	15	5
14	7	15	6	6	11	6
15	18	4	16	81	5	45
16	5	30	4	15	2	9
17	8	7	6	8	9	12
18	9	13	19	4	9	13
19	80	10	40	9	8	8
20	10	49	3	27	6	17